




**Futuristec**

**RingMouse V2.0**

**User's Manual**

 **Note:** A note provides important information that helps you make better use of the computer.

 **Caution:** A caution indicates that failure to follow the instructions may result in hardware damage or data loss.

 **Warning:** A warning indicates that failure to follow the instructions may result in property damage, personal injury, or death.

Version: 25.1128

The information in this document is subject to change without prior notice.

Reproduction of this material in any form without the written permission of Futuristec is strictly prohibited.

The Futuristec logo and "Ring Mouse" used in this document are trademarks of Futuristec.

Other trademarks and trade names used in this document represent the trademarks and names of their respective owners.

Futuristec disclaims ownership of any trademarks and trade names not owned by the company.

# Table of Contents

<b>Installation</b> .....	4
<b>Package Contents</b> .....	4
<b>Features</b> .....	5
1. Names and Functions of Each Part.....	5
2. Using Click and Touch Functions.....	6
3. Connecting the Ring Mouse to a Computer or Mobile Device.....	7
3-1. Connecting to Windows.....	7
3-2. Connecting to an Android Device.....	8
3-3. Connecting to an iOS Device.....	10
4. Using the Ring Mouse Properly.....	16
5. Understanding LED Indicators.....	17
6. Changing Modes.....	18
6-1) Expert Mode.....	18
6-2) Left-Hand Mode.....	18
6-3) Power-Saving Mode.....	19
7. Firmware Update.....	20
7-1) Firmware Update on Android Devices.....	20
7-2) Firmware Update on iOS Devices.....	22
<b>Product Specifications</b> .....	26
<b>Customer Center</b> .....	27

# Installation

## Recommended System Requirements

- Windows 10 or later
- iPadOS 16 or later
- iOS 16 or later
- Bluetooth 4.2 or later compatible

If your computer or mobile device does not support Bluetooth, you will not be able to connect to the Ring Mouse. In this case, you can purchase a commercially available Bluetooth dongle and use it by plugging it into your computer or mobile device.

## Package Contents

- Ring Mouse
- Quick Start Guide

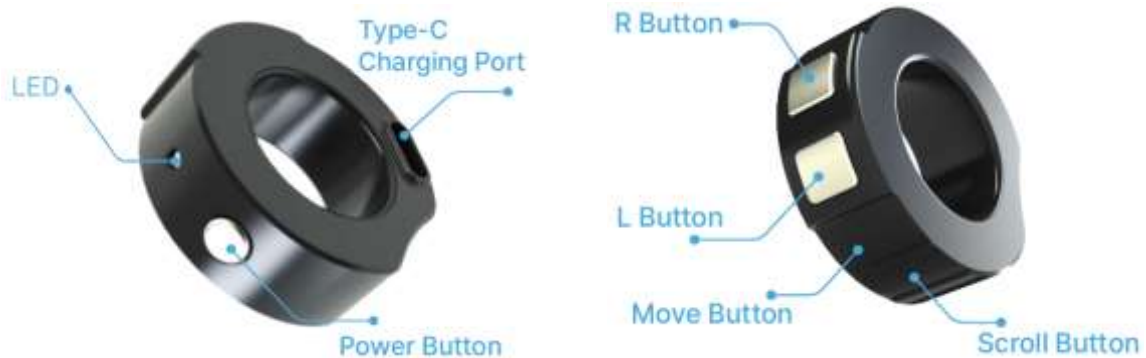


 This product is a wireless device certified for radio compliance.

Unauthorized disassembly or modification may void the compliance and lead to malfunction, safety hazards, or legal liability. Do not attempt to open or modify the device.

# Features

## 1. Names and Functions of Each Part



- Power Button: The power button is used to turn the Ring Mouse on and off.
  - **Power On:** Press the power button once. The LED will blink, indicating the status of the Ring Mouse through its blinking pattern.
  - **Power Off:** Press and hold the power button for more than 2 seconds. The LED will blink rapidly. Release the power button during this blinking to turn off the device.
  
- LED: The Ring Mouse's operating status is indicated by the LED.
  - **Waiting for Bluetooth Connection:** LED blinks slowly.
  - **Bluetooth Connected:** LED blinks briefly once every 4 seconds.
  - **Low Battery Voltage:** LED blinks twice briefly, indicating that the battery needs to be charged immediately.

✍ For more detailed LED operation, please refer to **"5. Understanding LED Indicators."**
  
- Buttons (Touch Control): The buttons on the Ring Mouse enable clicking and scrolling functions.
  - **Right Click:** Press the **R** button.
  - **Left Click:** Press the **L** button.
  - **Move Cursor:** Touch and hold the **Move** button with your thumb, then move the Ring Mouse. The cursor follows the movement, and it stops when you release your finger.
  - **Scrolling:** Touch and hold the **Scroll** button with your thumb. Tilt the Ring Mouse upward to scroll up and tilt it downward to scroll down.
  - **Back/Forward Function:**

While touching the scroll button with your thumb, moving the ring mouse to the left performs the "Back" action, and moving it to the right performs the "Forward" action.

*(Note: The Back/Forward function may behave differently depending on your operating system, application, or app.)*

## 2. Using Click and Touch Functions

- The Ring Mouse has **two click areas** and **two touch areas** that can be operated by lightly touching them with your thumb.
- Using these two clicks and two touch functions, you can move the mouse cursor, perform left/right clicks, and scroll. The detailed usage instructions are as follows.



### Pointer Movement (Left/Right)

To move the mouse pointer left or right, **touch and hold** the **Move button** while tilting the Ring Mouse in the desired direction. The pointer will stop moving when you release the button.



### Pointer Movement (Up/Down)

To move the mouse pointer up or down, **touch and hold** the **Move button** while moving the Ring Mouse vertically. The pointer will stop moving when you release the button.



### Scroll

To scroll, **touch and hold** the **Scroll button** while moving the Ring Mouse up or down. Scrolling will stop when you release the button.



### Back / Forward

While touching the **Scroll button**, move the Ring Mouse to the left to perform a **Back action**, and move it to the right to perform a **Forward action**. (Back and Forward actions may not work depending on the OS, program, or app you are using.)



### Left Click / Right Click

To perform a left-click, press the L button. To perform a right-click, press the R button. Double-click by pressing the L button twice quickly. To drag, press and hold the L button while moving the Ring Mouse.

### 3. Connecting the Ring Mouse to a Computer or Mobile Device

#### 3-1. Connecting to Windows

- 1) Press the power button to turn on the Ring Mouse. The LED will blink slowly, indicating that it is waiting for a Bluetooth connection.

If the LED blinks briefly once at regular intervals, the Ring Mouse is already connected via Bluetooth. In this case, additional Bluetooth connections cannot be made. Find the already connected device, disconnect it, and then try reconnecting.

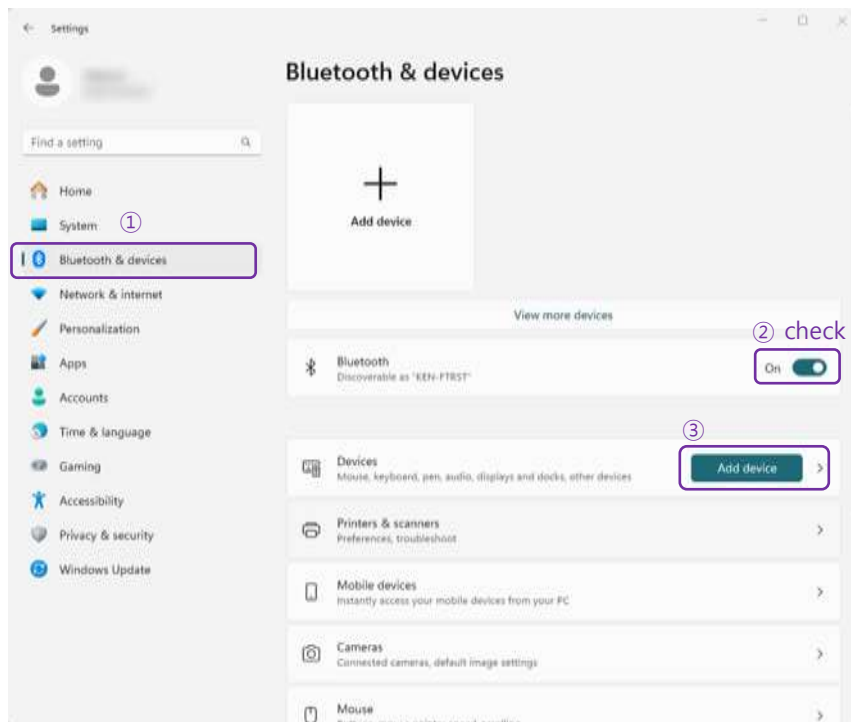


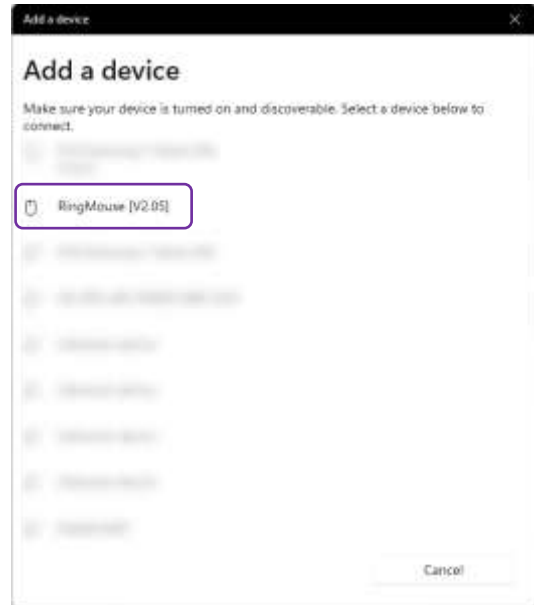
- 2) Go to **Windows > Settings > Bluetooth & Devices > Add Device** in sequence.

Make sure that Bluetooth is turned **on** and available.

In the **"Add a device"** window, look for **RingMouse [V2.xx]** in the list of available devices. Click on it to connect.

(This process is based on Windows 11 and may vary depending on the Windows version.)





### 3-2. Connecting to an Android Device

- 1) Press the power button to turn on the Ring Mouse. The LED will blink slowly, indicating that it is waiting for a Bluetooth connection.

If the LED blinks briefly once at regular intervals, the Ring Mouse is already connected via Bluetooth. In this case, additional Bluetooth connections cannot be made. Find the already connected device, disconnect it, and then try reconnecting.

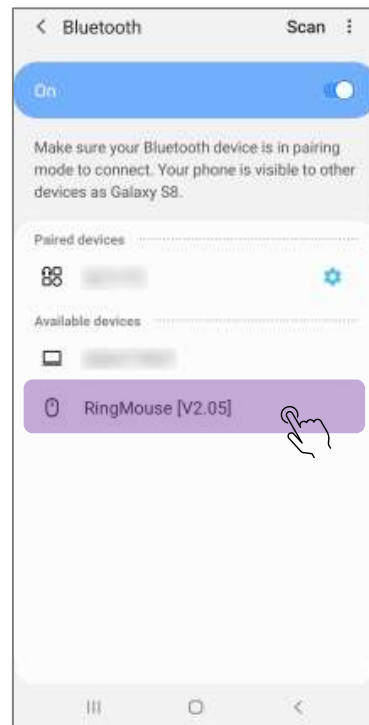
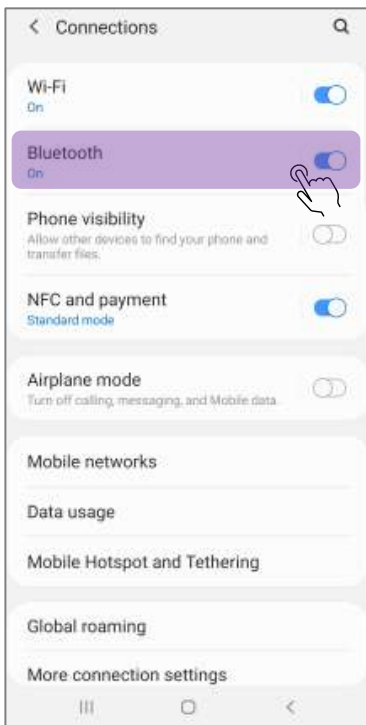
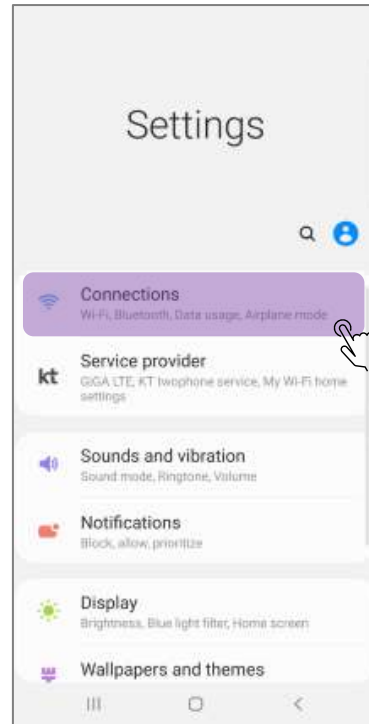


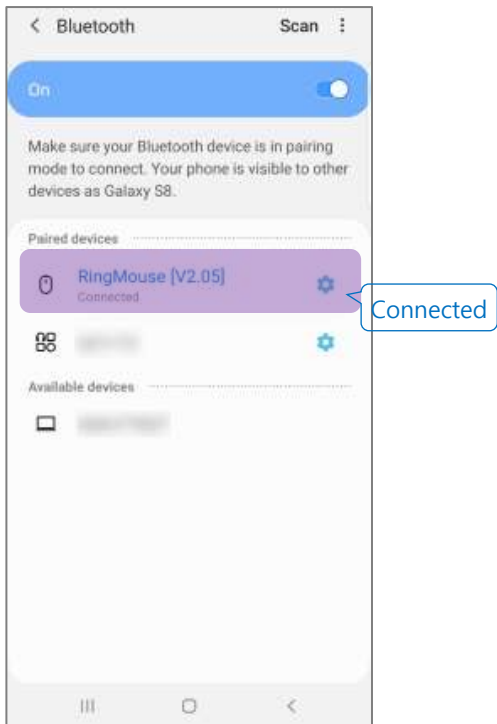
- 2) Tap **Settings** > **Connections** > **Bluetooth** in sequence.

Make sure that Bluetooth is set to On and available.

From the list of detected Bluetooth devices, find **RingMouse [V2.xx]** and tap it to connect.

(The settings menu may vary depending on the manufacturer and mobile device model. Please refer to the manufacturer's product manual for details.)





### 3-3. Connecting to an iOS Device

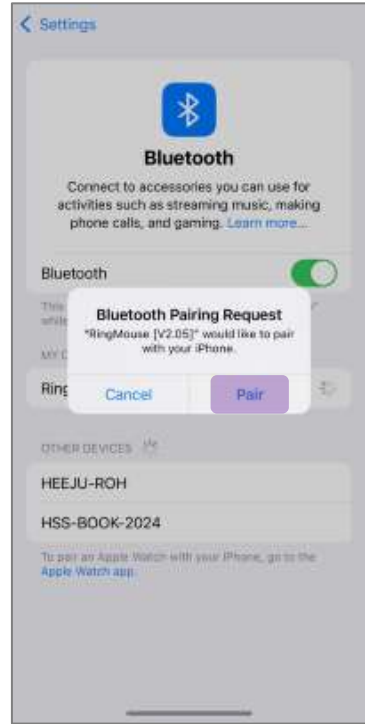
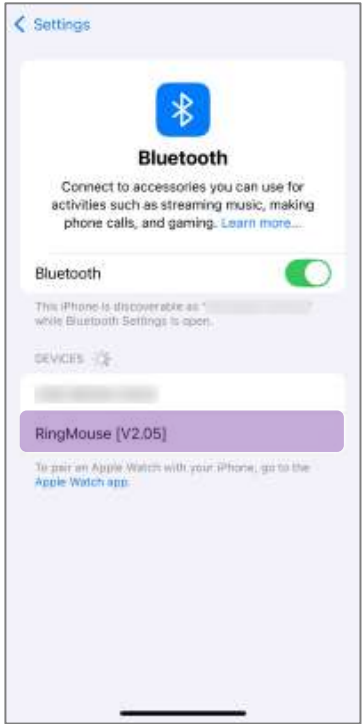
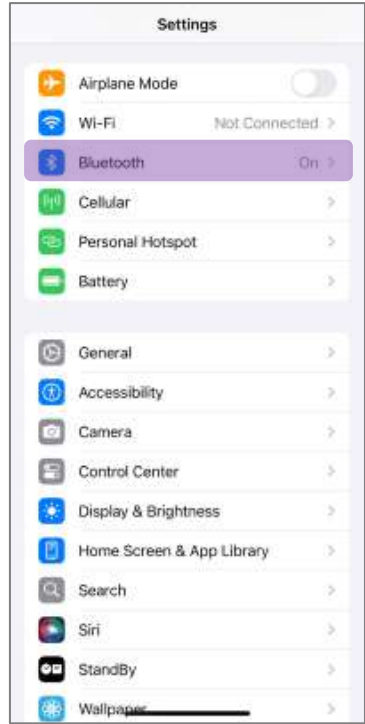
- 1) Press the power button to turn on the Ring Mouse. The LED will blink slowly, indicating that it is waiting for a Bluetooth connection.

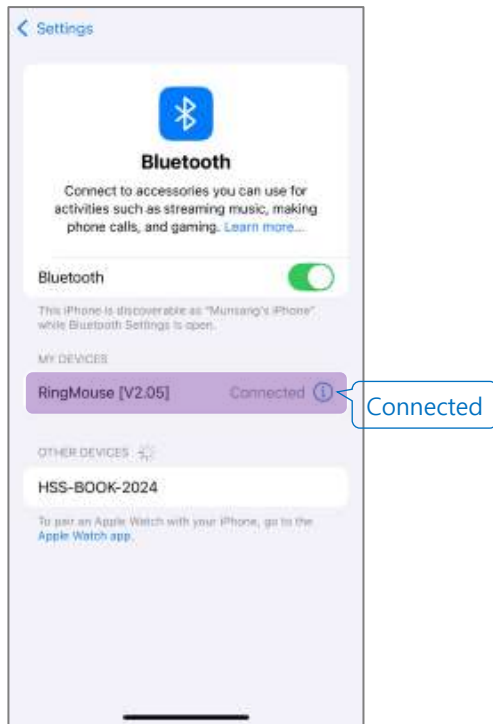
If the LED blinks briefly once at regular intervals, the Ring Mouse is already connected via Bluetooth. In this case, additional Bluetooth connections cannot be made. Find the already connected device, disconnect it, and then try reconnecting.




- 2) Tap **Settings icon** > **Settings** > **Bluetooth** in order.

When RingMouse [V2.xx] appears in the list of detected Bluetooth devices, tap it to connect. (The settings menu may vary depending on the device model and version. Please refer to the mobile device's user manual for details.)



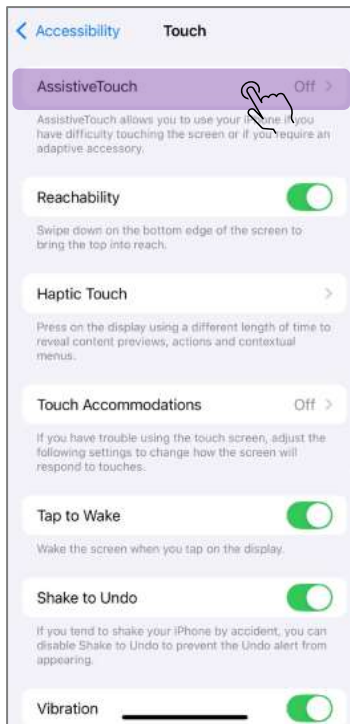
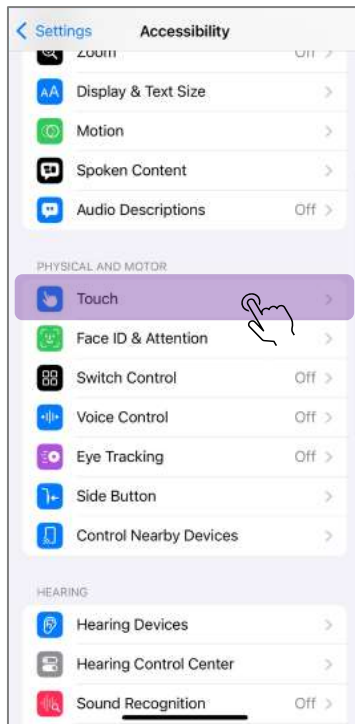


- 3) To make the mouse pointer appear on an iOS device, turn **AssistiveTouch** "On."  
(Refer to Apple's guide: <https://support.apple.com/en-us/111775>)

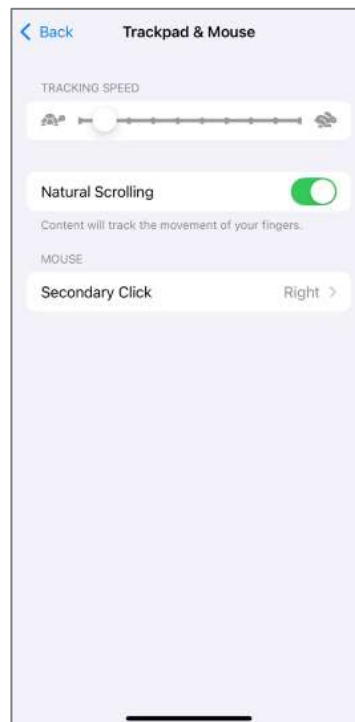
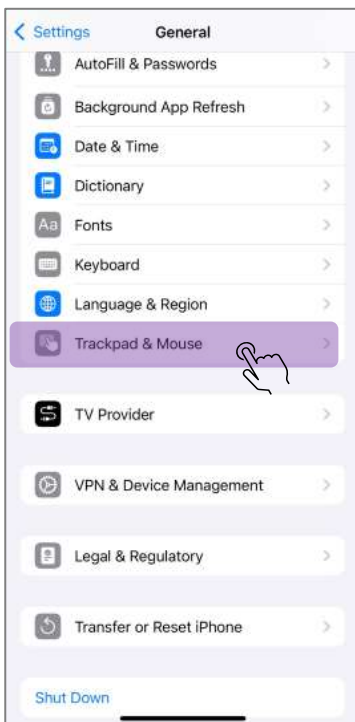
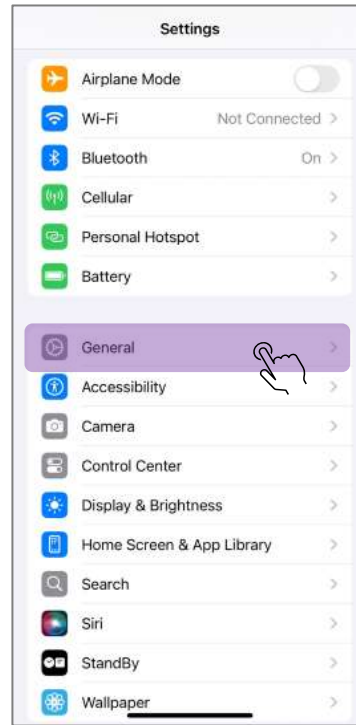
 How to Enable AssistiveTouch:

Go to **Settings > Accessibility > Touch > AssistiveTouch**, then toggle it **On**.

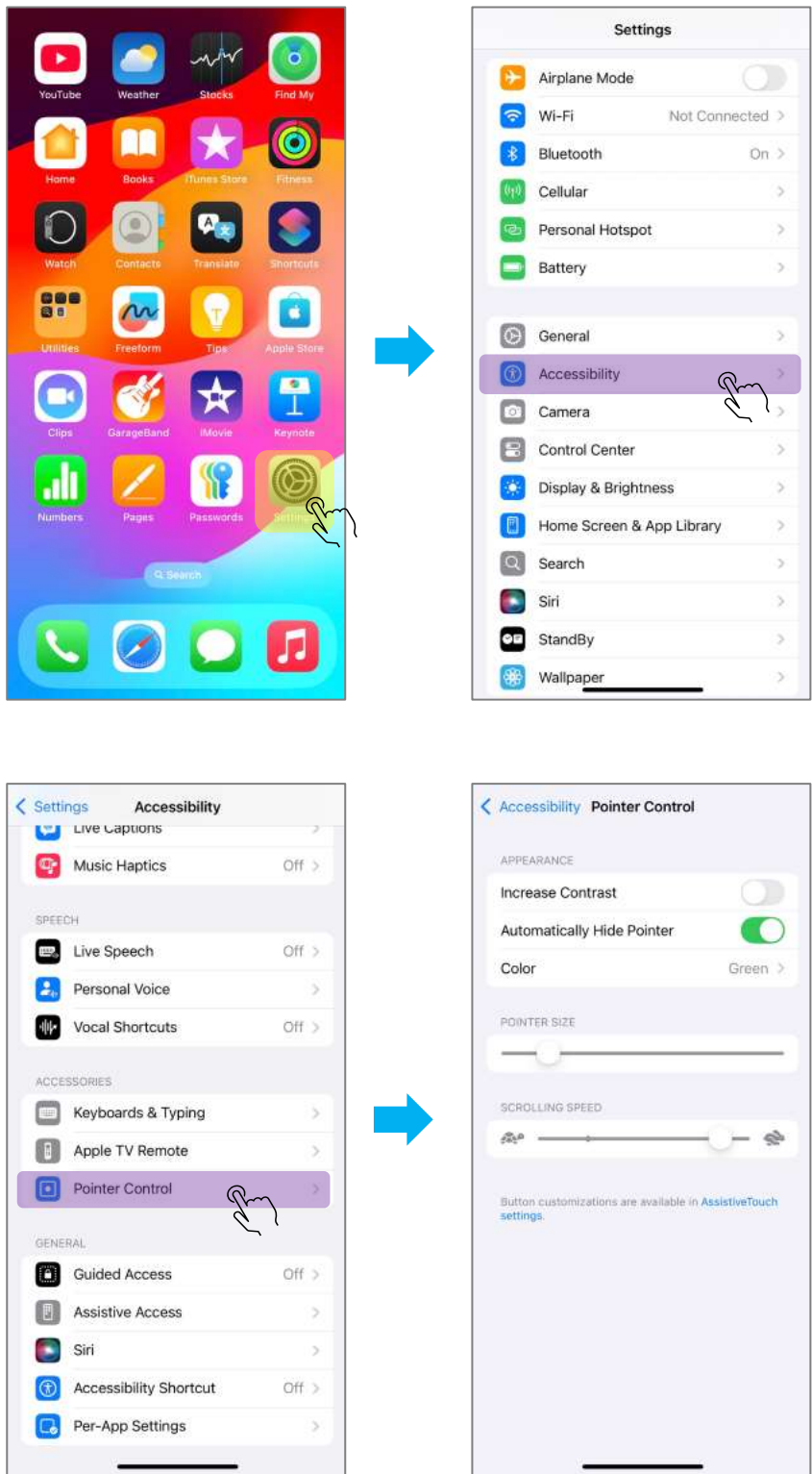




- 4) Adjusting Cursor Movement Speed: Go to **Settings** > **General** > **Trackpad & Mouse** and adjust the speed as needed.

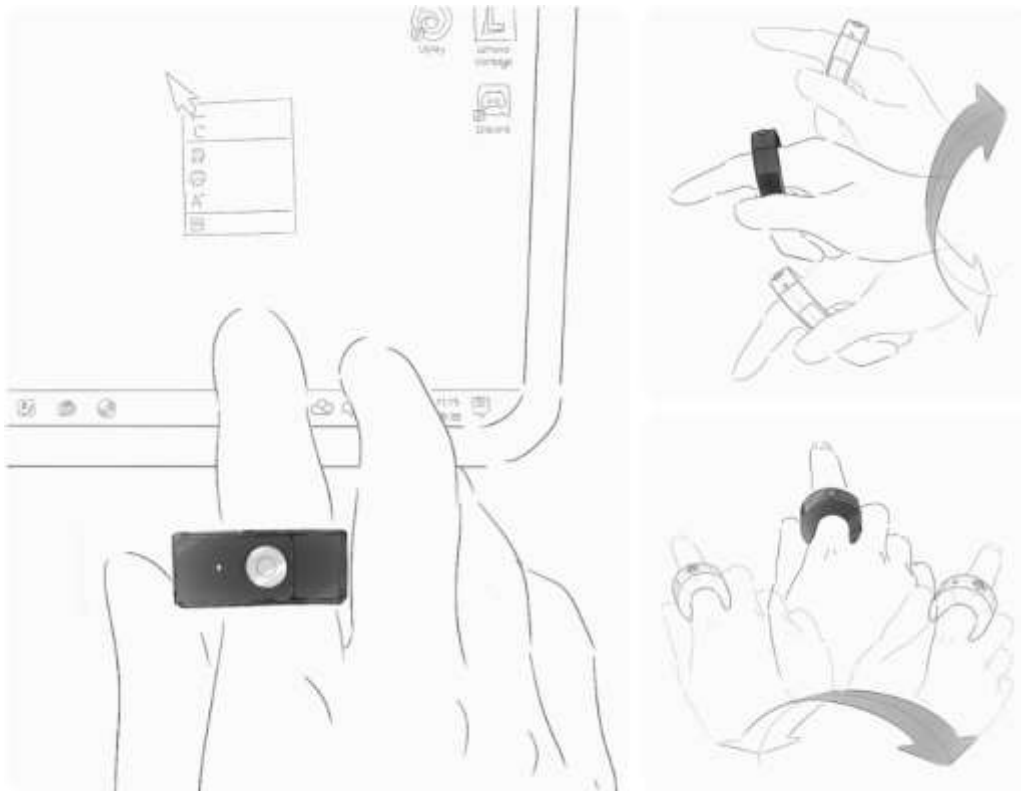


5) Adjusting Color, Pointer Size, and Scroll Speed: Go to **Settings > Accessibility > Pointer Control** to customize these settings.



#### 4. Using the Ring Mouse Properly

- To use the Ring Mouse correctly, wear it on your index finger with the concave side resting against your middle finger.
- Ensure that the power button faces upward.
- How to Move the Ring Mouse:
  - Position your index finger (wearing the Ring Mouse) so that it points at the screen.
  - Lightly touch the Move button with your thumb.
  - Rotate the Ring Mouse left or right, up or down in a fan-like motion using your finger or wrist.
  - Avoid moving your entire arm horizontally or vertically, as this may slow down the cursor movement. Instead, use an angled fan-like motion for smoother control.



## 5. Understanding LED Indicators

The Ring Mouse uses an LED to indicate various operating states. You can check the status of the Ring Mouse by observing the LED behavior.

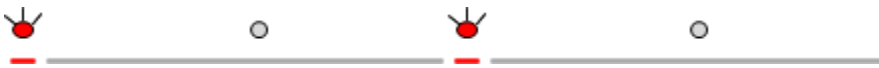
### 1) Waiting for Bluetooth Connection:

- The LED blinks at approximately 0.8-second intervals in a regular pattern.
- This indicates that the Ring Mouse is powered on and waiting for a Bluetooth connection.



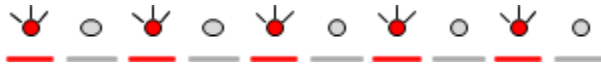
### 2) Bluetooth Connected:

- The LED briefly turns on and off every 4 seconds.
- This indicates that the Ring Mouse is successfully connected to a PC or mobile device via Bluetooth.



### 3) Power Off:

- Press and hold the power button for more than 2 seconds. The LED will blink rapidly. Release the button during this blinking, and the LED will turn off, indicating that the power is off.



### 4) Charging

- When the Ring Mouse is charging via a USB-C cable, the red LED remains on. Once charging is complete, the LED turns off.

### 5) Low Battery Level:

- When the battery voltage is low, the LED blinks to indicate a low battery warning.
- In this state, the LED blinks twice briefly every 2.6 seconds.
- Immediately connect a USB cable to charge the Ring Mouse.



### 6) Auto Power-Off Due to Low Battery

- If the battery voltage becomes critically low, the Ring Mouse will automatically turn off.
- Connect a USB cable to charge the device immediately.

## 6. Changing Modes

### 6-1) Expert Mode

- In **Expert Mode**, the cursor moves without touching the Move button. This mode is useful for users who find it inconvenient to touch the Move button every time.
- Quickly touch the Move button 4 times within 1.2 seconds to cycle through the modes: Basic Mode → Expert Mode 1 → Expert Mode 2 → Basic Mode
- When switching modes, the LED turns on for 0.5 seconds and then turns off, indicating the mode change.
- Expert Mode resets to Basic Mode when the Ring Mouse is powered off and on again. If needed, re-enable Expert Mode after restarting.

#### [Basic Mode]

Basic mode is the Ring Mouse default mode, where the cursor only moves while the Move area is being touched.

#### [Expert Mode 1]

After a **single tap on the Move button**, the cursor continues moving with the Ring Mouse's motion. However, if the Ring Mouse stops moving, the cursor also stops. The cursor will not move again until the Move area is touched again.

To move the cursor again, touch the Move button once.

#### [Expert Mode 2]

The cursor **moves automatically** according to the Ring Mouse's movement, without the need to touch the Move button.

If you want to stop the cursor temporarily, touch and hold the Move button—the cursor will remain still while the button is pressed.

### 6-2) Left-Hand Mode

- By default, the Ring Mouse is designed for **right-hand use**. If you prefer to wear it on your **left hand**, you can switch to Left-Hand Mode.
- To enable Left-Hand Mode, touch the Move button first, then press and hold the R button simultaneously for more than 2 seconds.
- When switching to Left-Hand Mode, the LED stays on for 1 second, and the Ring Mouse automatically reboots.
- Repeat the same action (touch the Move button and hold the R button for 2 seconds) to switch back to Right-Hand Mode.
- Left-Hand Mode remains active even after turning the Ring Mouse off and on again.

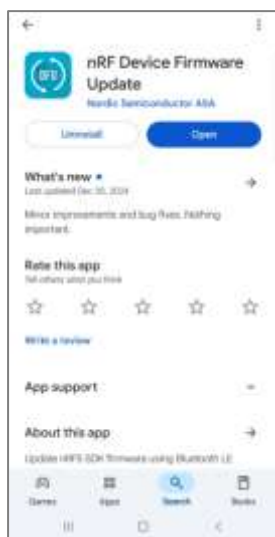
### 6-3) Power-Saving Mode

- If the Ring Mouse is idle for 3 minutes, it automatically enters Power-Saving Mode.
- In Power-Saving Mode, the LED turns off.
- To wake it up, press the power button, or L button, or R button, touch the Move or Scroll area, or move the Ring Mouse.

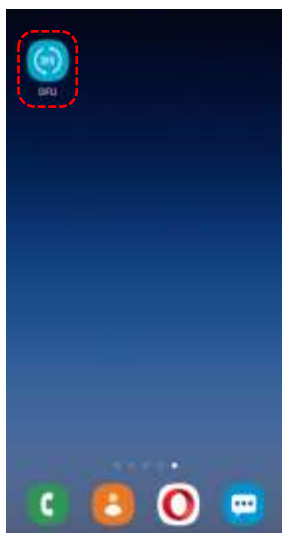
## 7. Firmware Update

### 7-1) Firmware Update on Android Devices

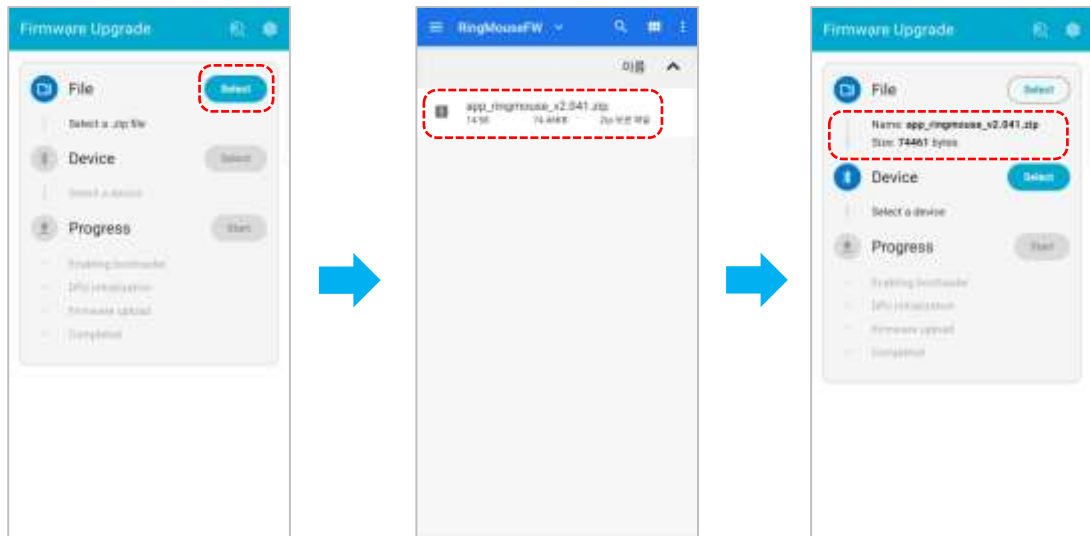
- (1) Disconnect the Bluetooth connection from any paired PC or tablet.
  - Go to **Settings > Connections > Bluetooth**
  - In Registered Devices, find "RingMouse [v2.xx]" and delete it.
- (2) Download the firmware package to your smartphone.
  - Visit <https://www.futuristec.co.kr>
  - Go to Customer Support > Resources to download the firmware file.
  - The file name will be "app\_ringmouse\_v2.xx.zip", where "v2.xx" represents the firmware version (e.g., "RingMouse [V2.05]").
- (3) Search for and install "nRF Device Firmware Update" from the Google Play Store.



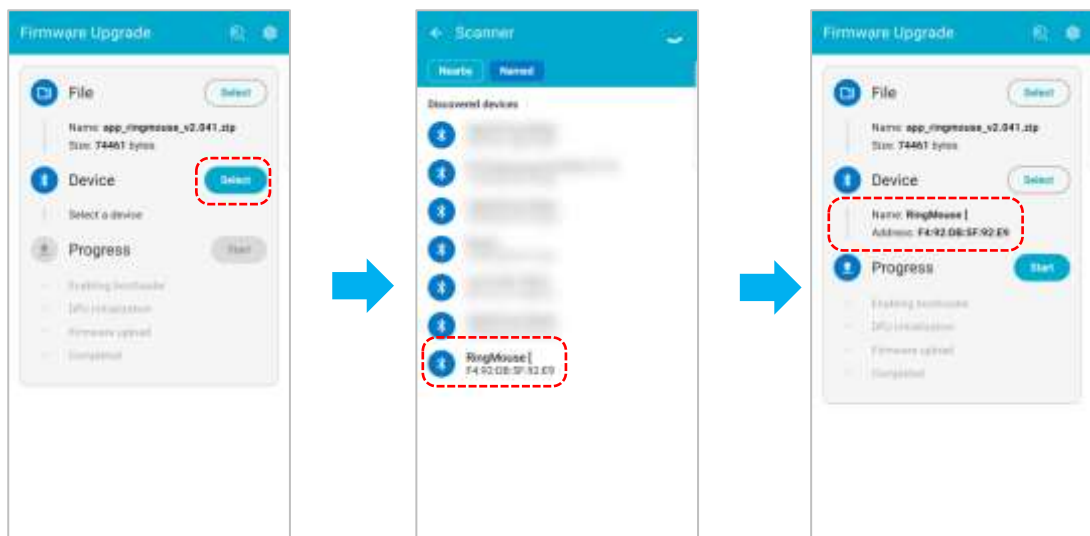
- (4) Open the **DFU**(nRF Device Firmware Update) app on your mobile device after installation.



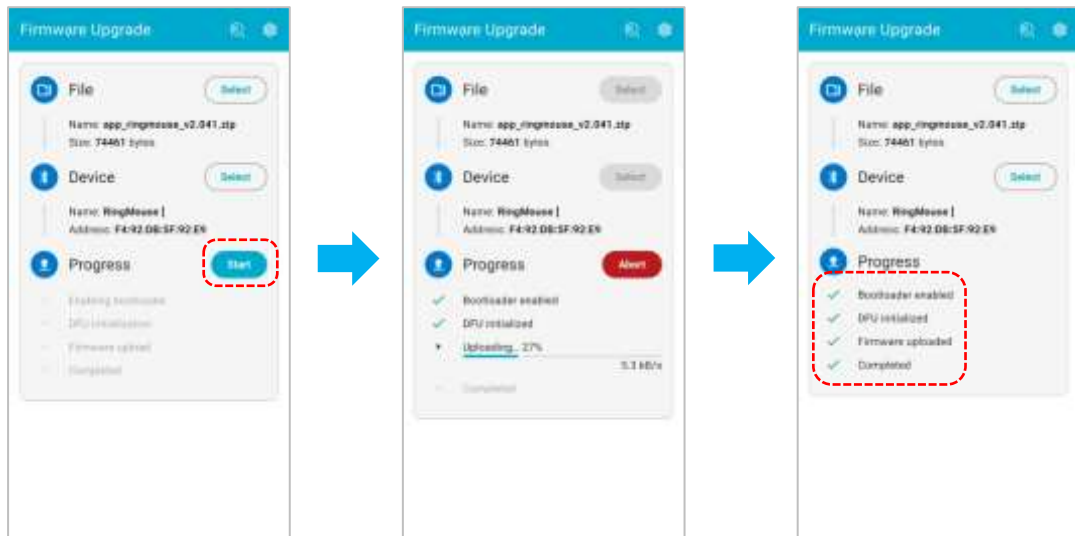
- (5) In the Firmware Upgrade screen, tap **File > Select**, then choose the firmware file (app\_ringmouse\_v2.xx.zip) that you downloaded from the resources section.



- (6) Tap **Device > Select** to open the Scanner window. In the list of available devices, select "RingMouse [V2.xx]".



(7) Tap the **Progress > Start** button to begin the firmware upgrade.



(8) The firmware upgrade is now complete.

## 7-2) Firmware Update on iOS Devices

(1) Disconnect the Bluetooth connection from any paired PC or tablet.

- Go to **Settings > Connections > Bluetooth**
- In Registered Devices, find "RingMouse [v2.xx]" and delete it.

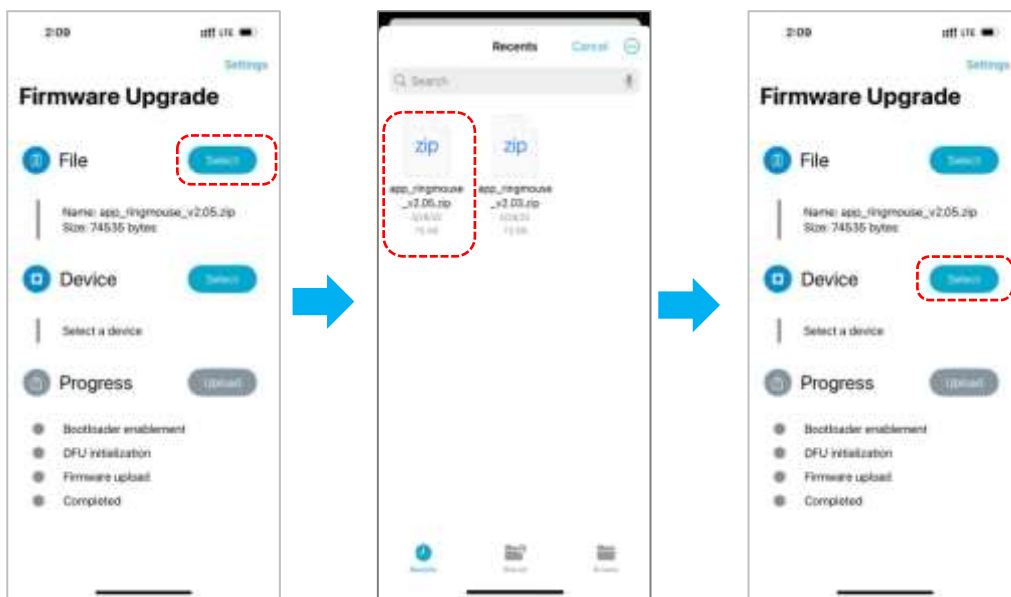
(2) Download the firmware package to your smartphone.

- Visit <https://www.futuristec.co.kr>
- Go to Customer Support > Resources to download the firmware file.
- The file name will be "app\_ringmouse\_v2.xx.zip", where "v2.xx" represents the firmware version (e.g., "RingMouse [V2.05]").

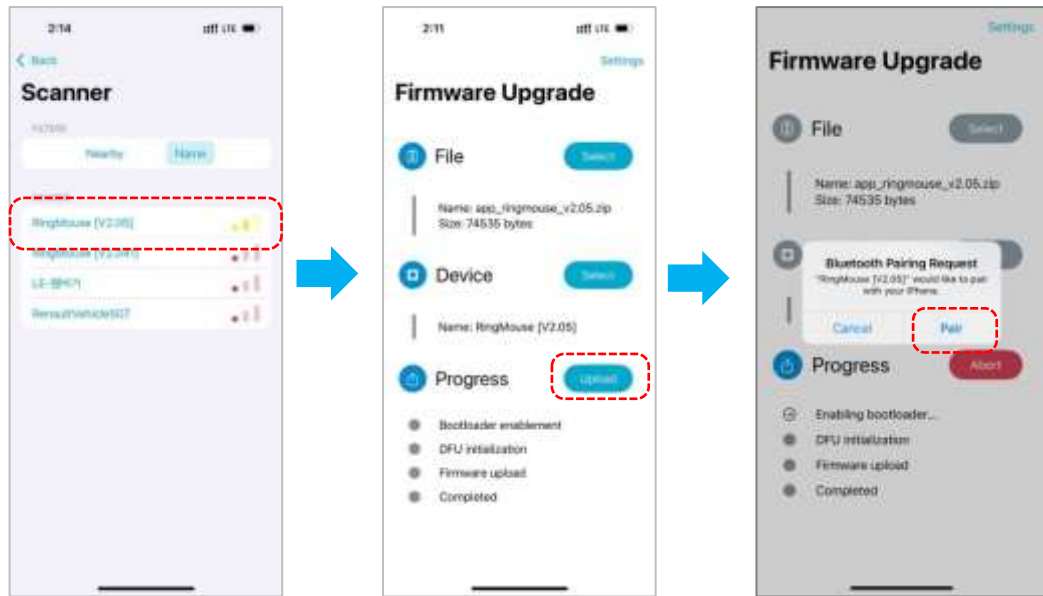
(3) Search for and install "nRF Device Firmware Update" from the App Store.



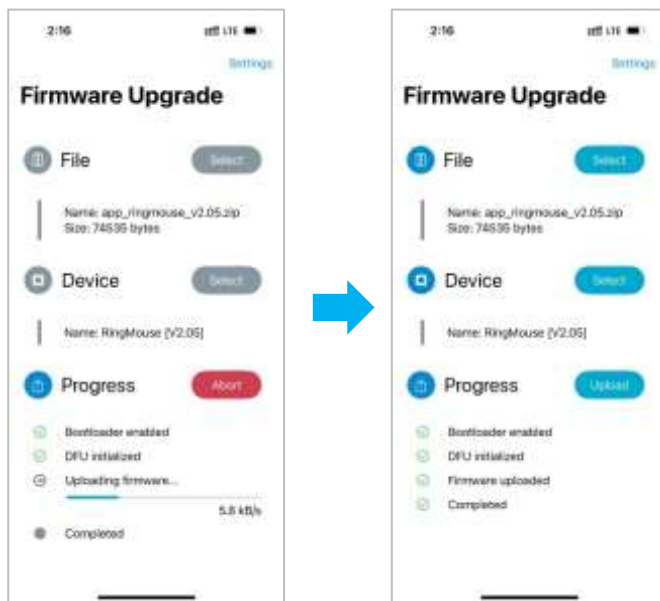
- (4) Open the app and tap **File** > **Select**, then choose the firmware file (app\_ringmouse\_v2.xx.zip) that you downloaded from the resources section.



- (5) Tap **Device** > **Select** to open the Scanner window. In the list of available devices, select "RingMouse [V2.xx]".  
Tap **Progress** > **Upload** to start the firmware update. A pairing request window will appear.

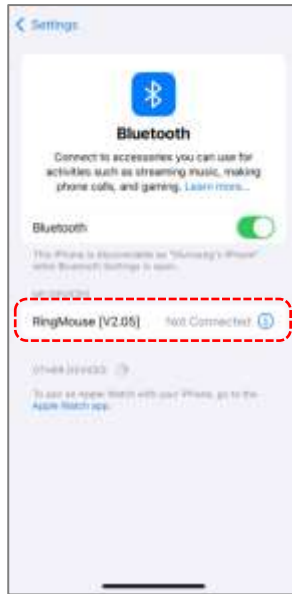


(6) Tap **"Pair"** to establish the connection and begin the firmware upgrade.



(7) Remove the device from My Devices after the update.

- Go to **Settings > Bluetooth**.
- Find "RingMouse [V2.xx]" under My Devices and delete it.



(8) The firmware upgrade is now complete.

## FCC Information

This device complies with part 15 of the FCC Results. Operation is subject to the following two conditions:

- (1) This Device may not cause harmful interface, and
- (2) This device must accept any interference received, including interference that may cause undesired operation.

Note: This equipment has been tested and found to comply with the limits for CLASS B digital device, pursuant to Part 15 of FCC Rules. These limits are designed to provide reasonable protection against harmful interference when the equipment is operated in a commercial environment This equipment generates, uses and can radiate radio frequency energy and, if not installed and used in accordance with the instructions, may cause harmful interference to radio communications. However, there is no guarantee that interference will not occur in a particular installation. If this equipment does cause harmful interference to radio or television reception, which can be determined by turning the equipment off and on, the user is encouraged to try correct the interference by one or more of the following measures:

- 1.1. Reorient or relocate the receiving antenna.
- 1.2. Increase the separation between the equipment and receiver.
- 1.3. Connect the equipment into an outlet on a circuit different from that to which receiver is connected.
- 1.4. Consult the dealer or experienced radio/TV technician for help.



### WARNING

Changes or modifications not expressly approved by the manufacturer could void the user's authority to operate the equipment.

"CAUTION: Exposure to Radio Frequency Radiation.


Antenna shall be mounted in such a manner to minimize the potential for human contact during normal operation. The antenna should not be contacted during operation to avoid the possibility of exceeding the FCC radio frequency exposure limit.

## Product Specifications

Items	Description
Product Name	Ring Mouse
Model	RMWTB200 (Black) RMWTW200 (White)
Weight/Size	9g / 39mm x 40mm x 13mm
Ratings	Rated Power: 5V / 0.07A Battery: 3.7VDC / 60mAh Lithium-ion Polymer (LIP) Continuous operating hours: 12 hours when fully charged Operating Temp: 10°C ~ 32°C
Bluetooth	Bluetooth 5.1
Frequency	Tx/Rx 2402MHz ~ 2480MHz
Version	Hardware version : V2.0 Firmware version : V2.217
Address (Head Office)	202-1, 169 Gaetbeol-ro, Yeonsu-gu, Incheon, Republic of Korea
Customer Center	Refer to the QR code below.
Regulatory Certification	<b>KC</b> : R-R-fTR-RMWTB200  <b>R 210-253328</b> <b>J-MIC</b> :  <b>FCC ID</b> : 2BQZ4-RMWTB200
Assembly Method	This product casing is assembled with strong adhesive and cannot be disassembled.

## Customer Center



 You can visit our website ([www.futuristec.co.kr](http://www.futuristec.co.kr)) to find more information.